

Manual with instalation proces for engines 1JZ / 2JZ / GT / GTE / FSE with
DODGE CHALLENGER / CHARGER / HELLCAT/
ZF 8HP70 / 8HP90

E-mail: adamat@poczta.onet.eu

1. Adapter installation on engine

No	Bolts type	Size	Qty
1	DIN961	M12x1,25x25	5
2	DIN912	M10x35 assembled from behind	3

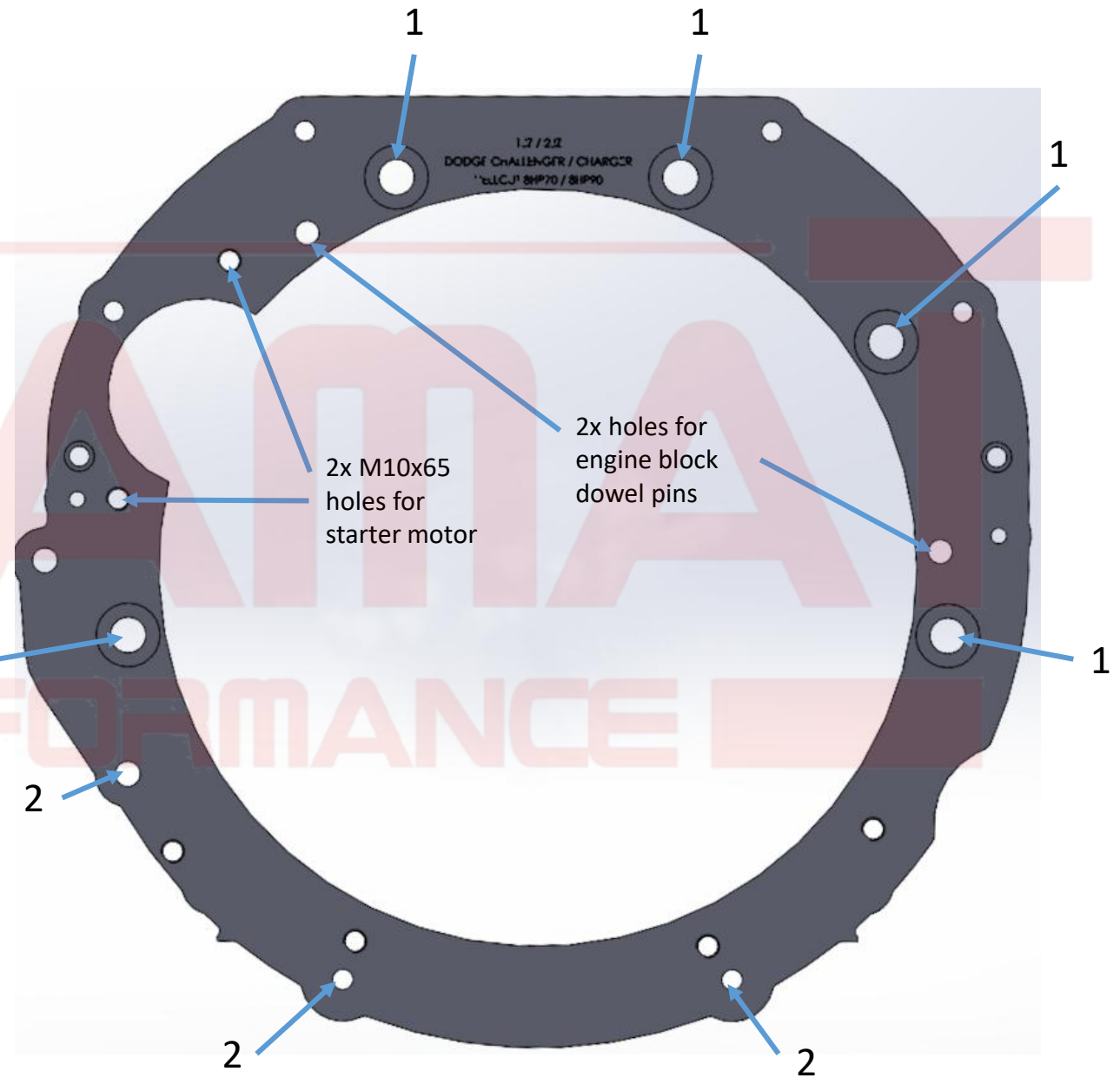
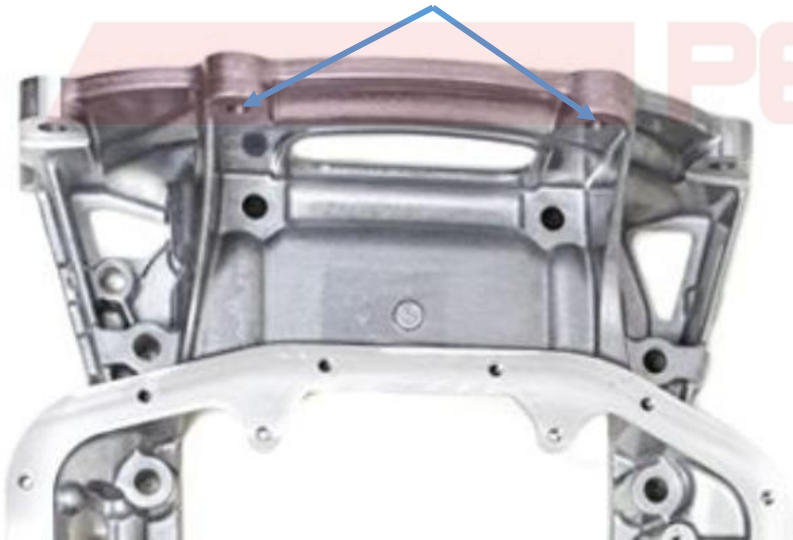
DIN961



DIN912



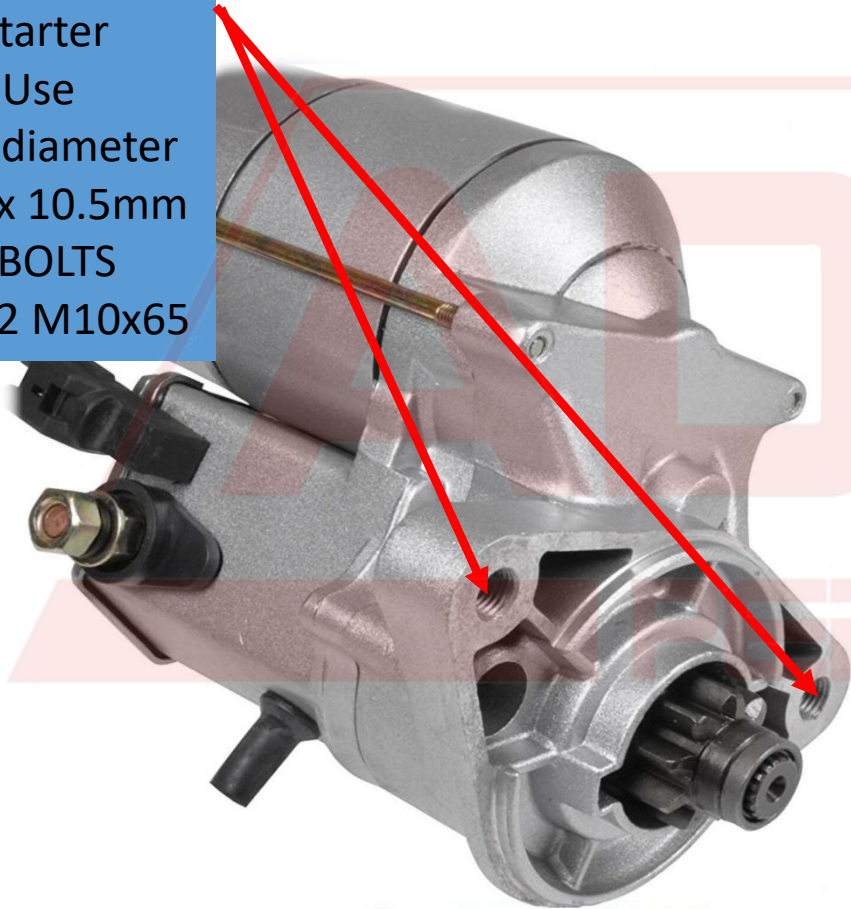
Remove OEM
threads in
sump kit using
Ø10,5 driller



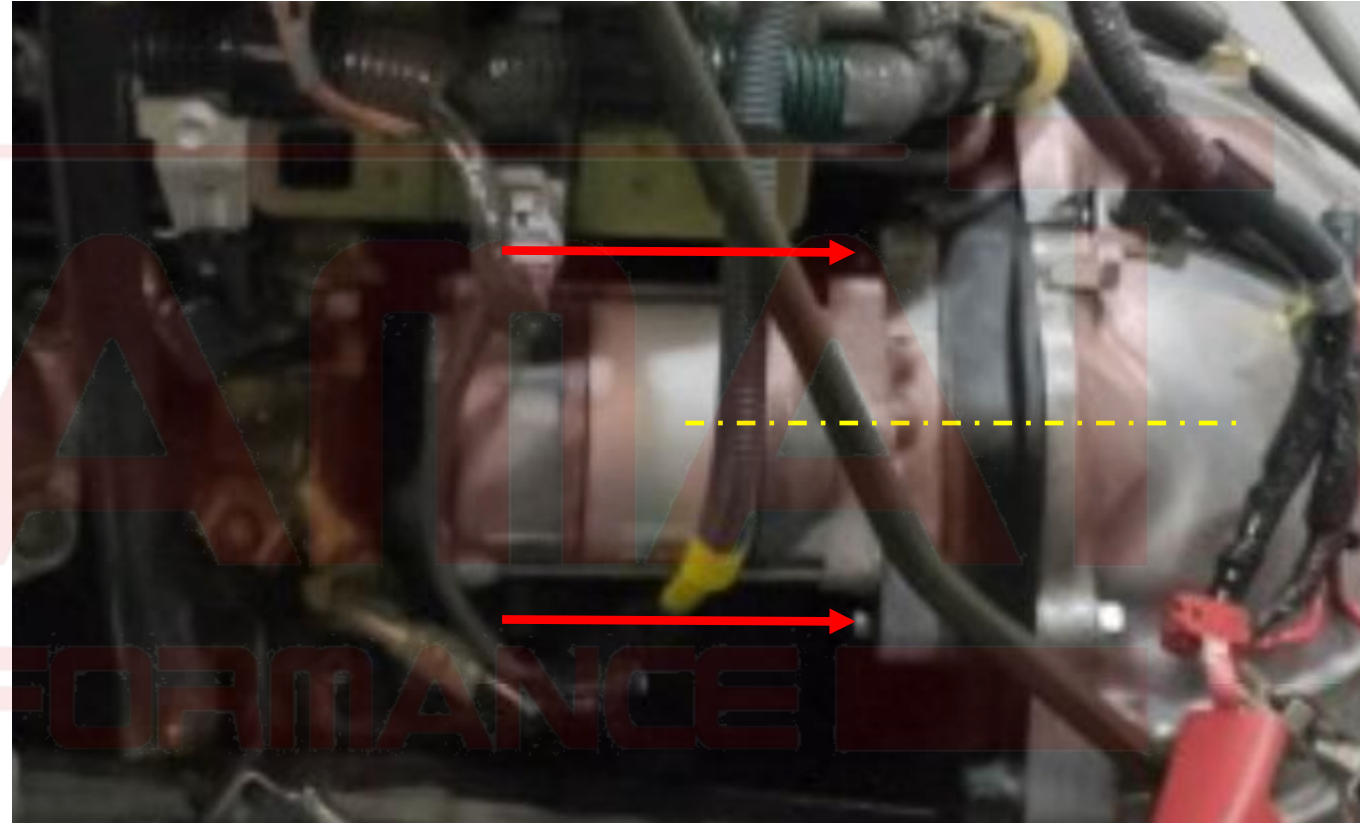
2. Starter motor installation on engine.

Works with OEM automatic / manual starter motor

Remove thread from starter holes. Use drill diameter 10 max 10.5mm
USE 2 BOLTS
DIN912 M10x65



Bolts direction installation



Please ensure that starter motor gear wheel don't touching flywheel starter ring.

3. 1JZ / 2JZ twin clutch flywhell instalation.

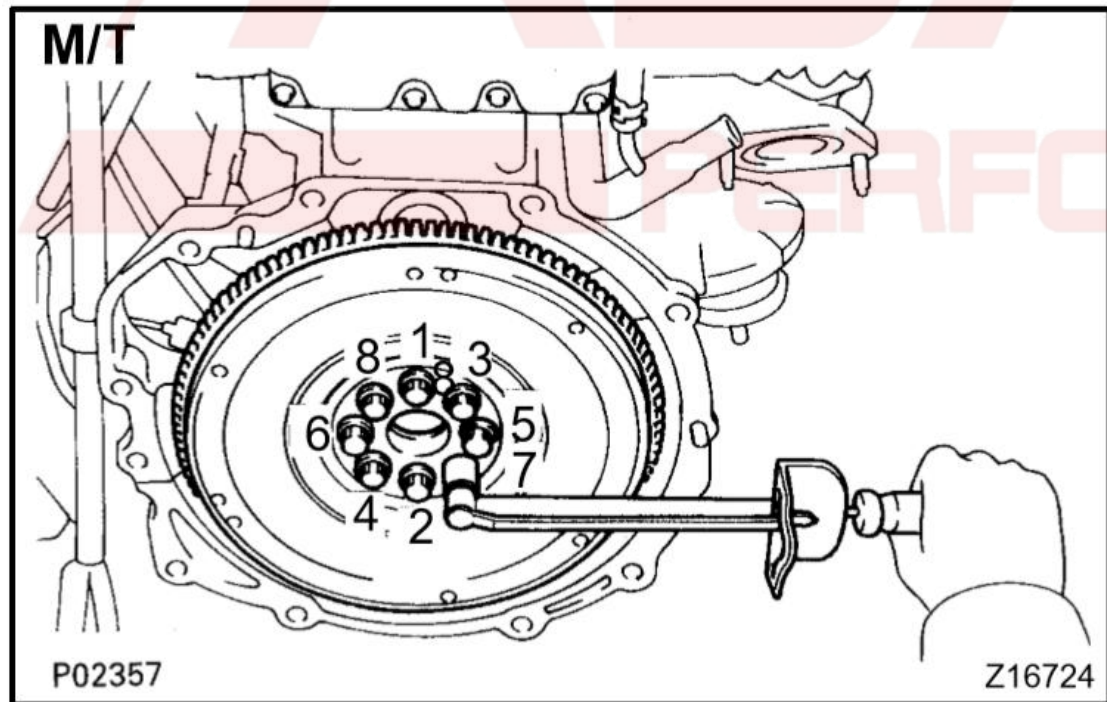
WE DONT USE JZ SHIM FROM AUTOMATIC TRANMISSION. MAIN FLYWHELL ASSEMBLED DIRECTLY TO CRANKSHAFT.

Torque for bolts from kit M10x1.25x35 12.9 class

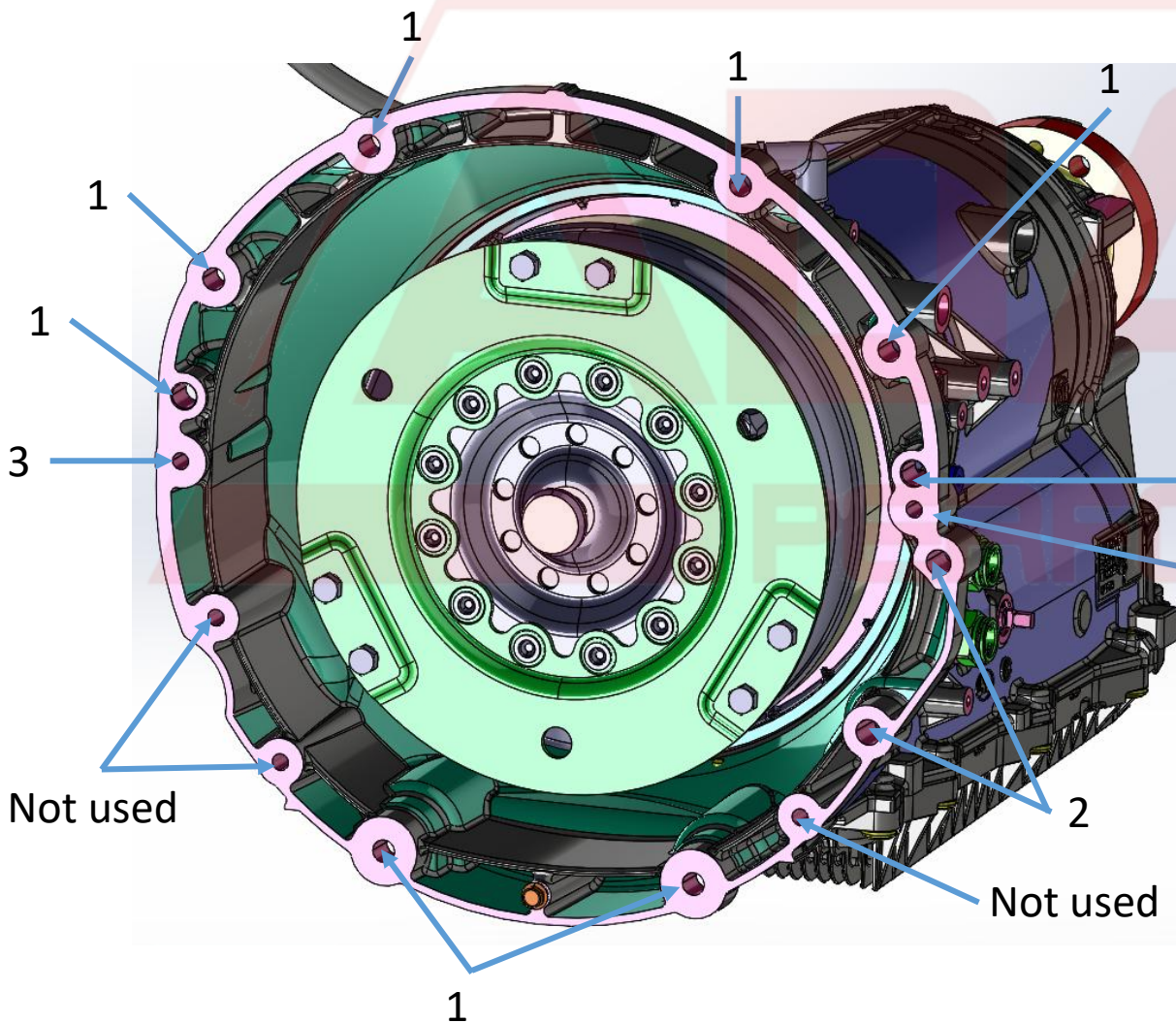
PLEASE ENSURE THAT BOLTS ARE NOT TO LONG. IF NESCEASSARY PLEASE MAKE IT SHORTEN.

TO LONG BOLTS CAN BLOCK CRANNKSHAFT.

- use lubricant SOFT thread locker
- first stage 49Nm
- Secound stage 65Nm
- final stage 92Nm



4. Assy transmission with torque converter on engine.
Bolts chart.



N o	Bolts type	Size	Qty
1	DIN912	M10x35	7
2	DIN912	M10x40	2
3	DIN912	M8x40 Positioning dowel pin in adapter	1
4	DIN912	M8x45	2
	Dowel 14,5	Assembled in adapter plate	2

Only positioning
Hole for dowel pin in adapter



Depending on the production year of the transmission, there are two different converter shaft sizes:

-For older transmissions:

The converter shaft diameter is approximately 34mm.

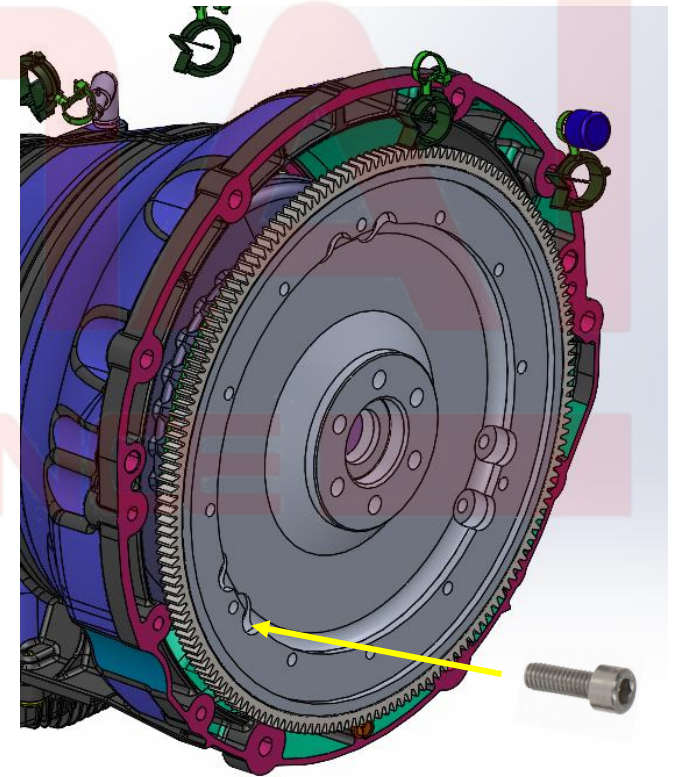
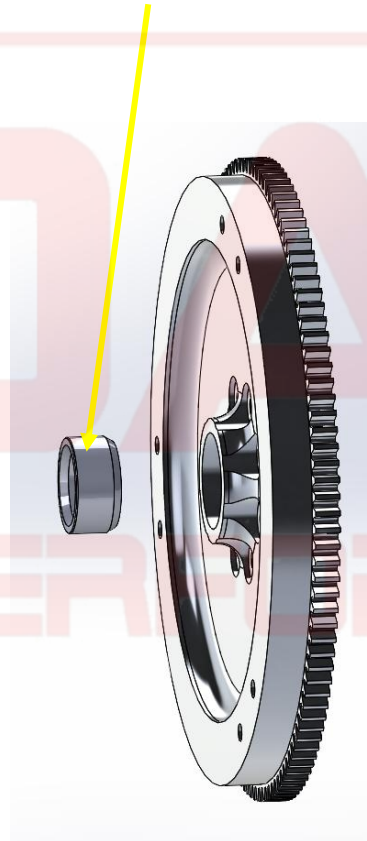
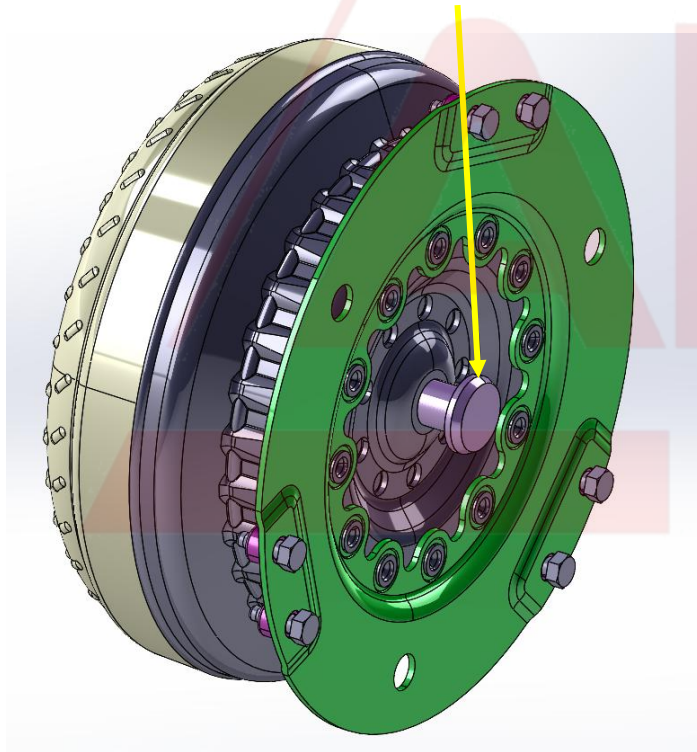
-For newer transmissions:

The converter shaft diameter is approximately 46mm.

To install the reduction ring in the flywheel by pressing it, for a gearbox with a pin diameter of approximately 34mm.

Secure the converter using 6x DIN6921 M8x35 screws, with a minimum grade of 10.9 and a final torque of 67Nm.

Use LOCTITE SOFT THREAD LOCKER adhesive.



5. Assy transmission with torque converter on engine (Example View).

- 2** Torque for bolts from kit DIN912 6x M8x50 12.9class
Use loctite 243 soft thread locker
-final stage 47Nm

